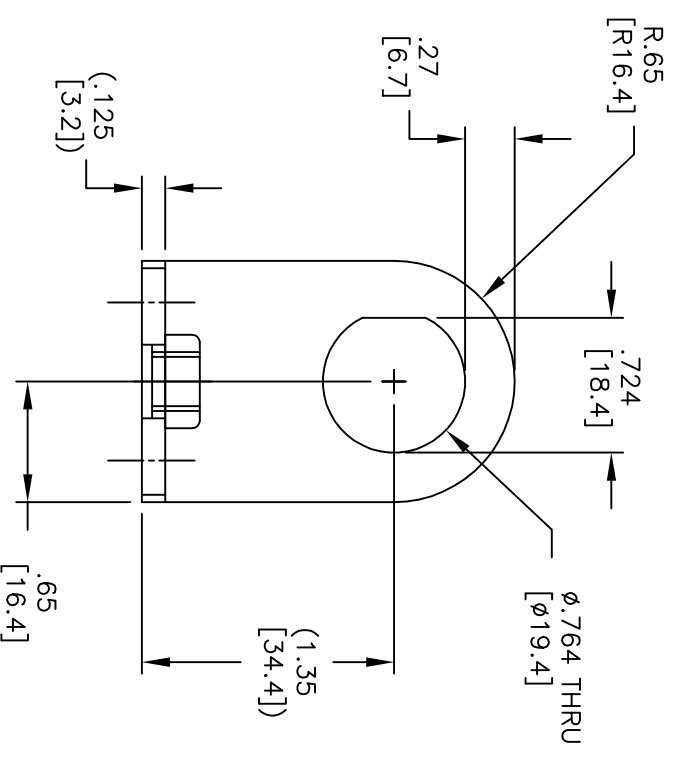
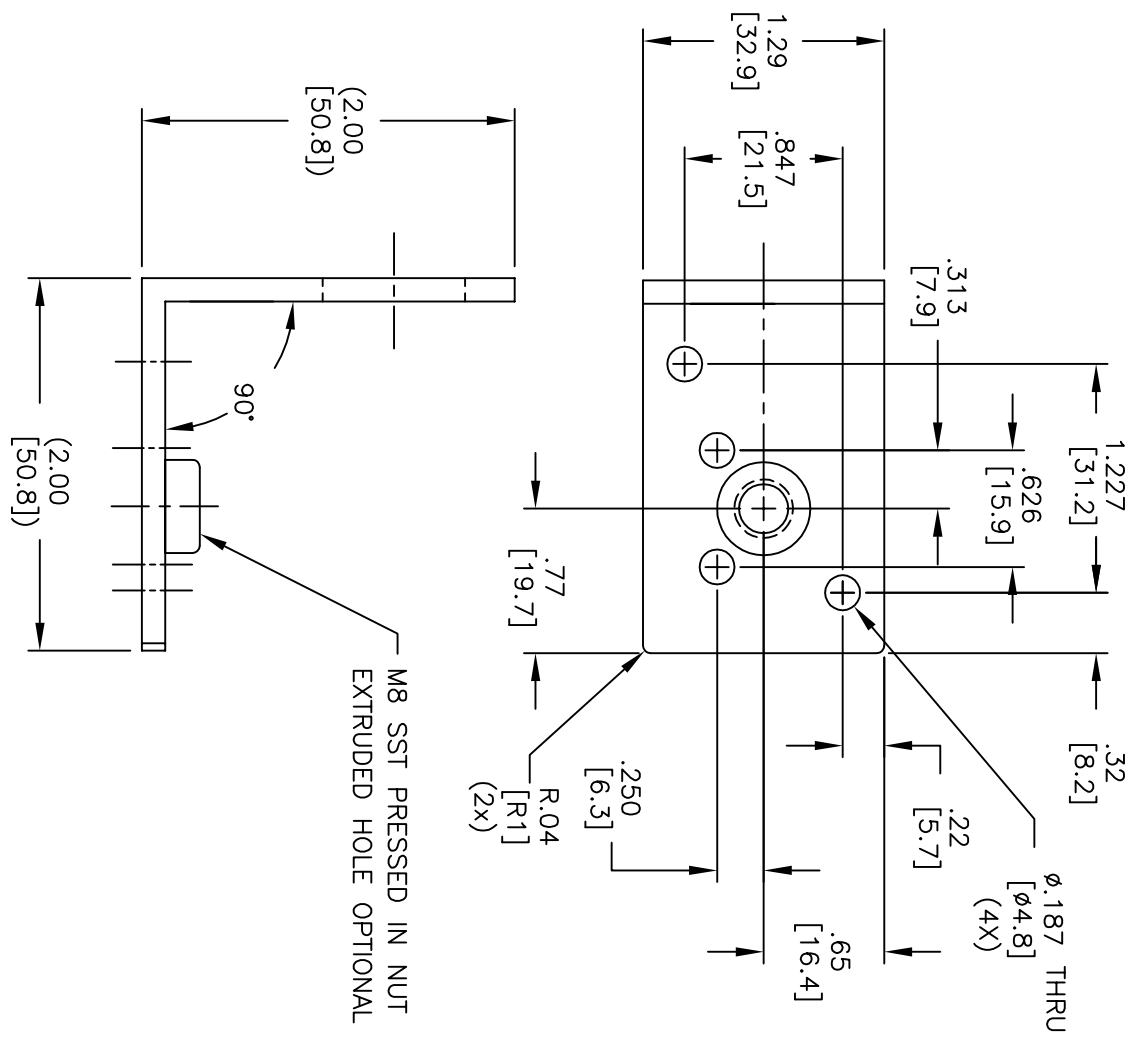


PROPRIETARY THIS DRAWING AND DESIGNS DEPICTED ARE THE PROPERTY OF Nextek Inc. AND MAY NOT BE REPRODUCED, COPIED OR UTILIZED WITHOUT EXPRESS WRITTEN PERMISSION OF Nextek Inc. COPYRIGHT Nextek Inc.

REV	ECO	DESCRIPTION	DRAFT	DATE	APPROVED
01	2580	ADDED MATERIAL	BJB	4/28/16	GMK



M8 SST PRESSED IN NUT
EXTRUDED HOLE OPTIONAL

MATERIAL: ALUMINUM, 6061-T6 OR 6063-T5 OR 6063-T4

2"x2"x1/8" SQUARE CORNER ANGLE STOCK

FINISH: ELECTROLESS NICKLE. 50u" MINIMUM

Nextek Inc. Westford, Massachusetts 01886 www.nexteklightning.com

DRAWN:	DATE:	DO NOT SCALE	DEFAULT TOLERANCES	TITLE
P. HUNTER	1/6/10	MACH. SURFACES 63	.X = ±.030	BRACKET, 3/4"
RELEASED:	DATE:	.005ITR	.XX = ±.010	SIZE: DRAWING NO.
G. KAUFFMAN	8/30/10	DEBURR AND BREAK ALL SHARP EDGES	.XXX = ±.005	A 750-0632
		ACAD 2000 FILE: 750-0632 R01	X' = ±.2°	SCALE: 1=1
			DIMENSIONS IN INCHES [MM]	WT
				SHEET 1 OF 1
				REV
				01

